



Automation

Quick Start Guide

Document information

Authorised use	© acQuire Software Pty Ltd
Document name	Automation - Quick Start Guide
Date	May 2017



Table of contents

1 Overview	1
1.1 Prerequisites	1

1 Overview

The automation component of acQUIRE GIM Suite lets you schedule key operations to run unattended at specified times. There are currently two types of automation that are supported:

- **Data Caching:** This involves storing a snapshot of the current live data set in a dedicated cache table, providing fast read access for large or complex form definitions that might otherwise run very slowly.
- **Task Automation:** This lets you schedule jobs to execute common acQUIRE 4 tasks, such as importing and exporting data sets, and transforming coordinates.

1.1 Prerequisites

To use the automation functionality, the acQUIRE Neo meta system must be installed on your acQUIRE 4 database. However, you do not need to use acQUIRE Neo to use the automation feature - acQUIRE 4 will prompt you to install it when you access any of the **Automation** menu options in the main **Manage** menu.

There are also some preliminary setup steps that must be performed on the server:

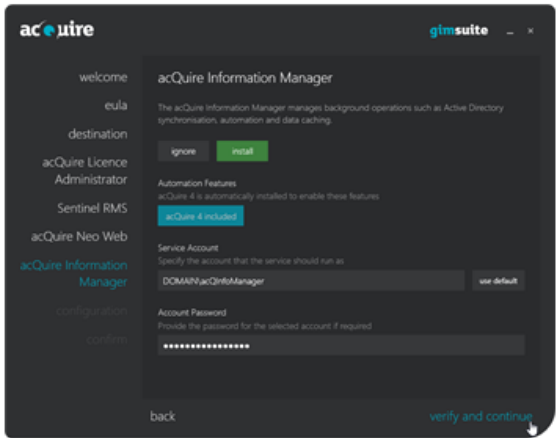
- acQUIRE Information Manager must be installed.
- The acQUIRE configuration database must have been deployed (this is done as part of the server installation, at the same time that acQUIRE Information Manager is installed).
- The login used by the Information Manager to connect to the configuration database and to the target acQUIRE 4 database must have been created on the SQL Server instance that the database resides on. It must also be mapped to the appropriate roles on each database.
- To run task automation jobs, the Information Manager's service account (or the machine that Information Manager is installed on) must have access to an acQUIREClient licence. This is not required when executing data caching jobs, however.

This Quick Start Guide gives a very high-level overview of all the steps required to get up and running with the automation feature - refer to the *Automation User Guide* for more information on each of the steps.

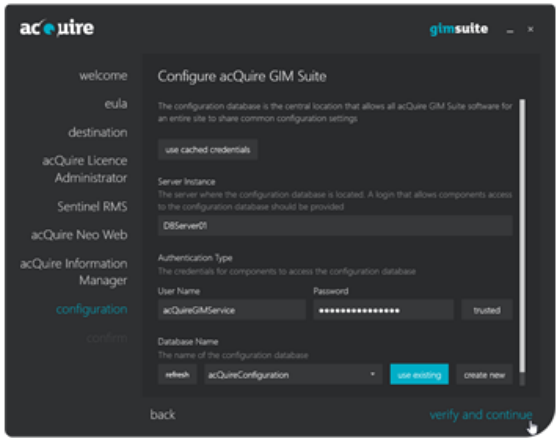
The steps in this guide assume the example setup described in the following table:

Machine	Type	Details
AppServer01	Application server	<p>Application server used for acQure GIM Suite Server components. In this example:</p> <ul style="list-style-type: none"> • acQure Neo Web already exists on the server and will be upgraded. • acQure Information Manager will be installed for the first time. The Information Manager service will use a domain account called 'DOMAIN\acQInfoManager'.
DBServer01	Database server	<p>Database server used to host all acQure GIM Suite databases for a suite. For the example in this guide, the databases used are:</p> <ul style="list-style-type: none"> • acQureConfiguration: The configuration database used by acQure GIM Suite Server components, such as Information Manager and acQure Neo Web. • Banksia01: An ADM data source on which automation jobs will be configured. • Banksia02: An ADM data source which will <i>not</i> be used for automation. <p>An 'acQureGIMService' login (using SQL Server authentication) has been created on the server, but not yet mapped to any databases.</p>
Client01	Client machine	<p>Client machine used by the acQure manager user to configure automation jobs.</p>

Step 1: Installation



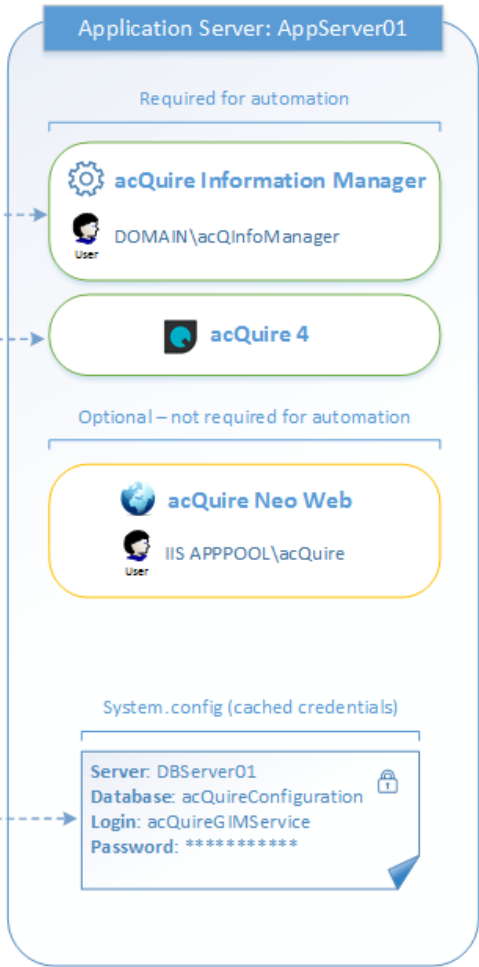
1 Select the **Install** option for the acquire Information Manager and set the service account that it will use.



2 Define the location of the acquireConfiguration database.

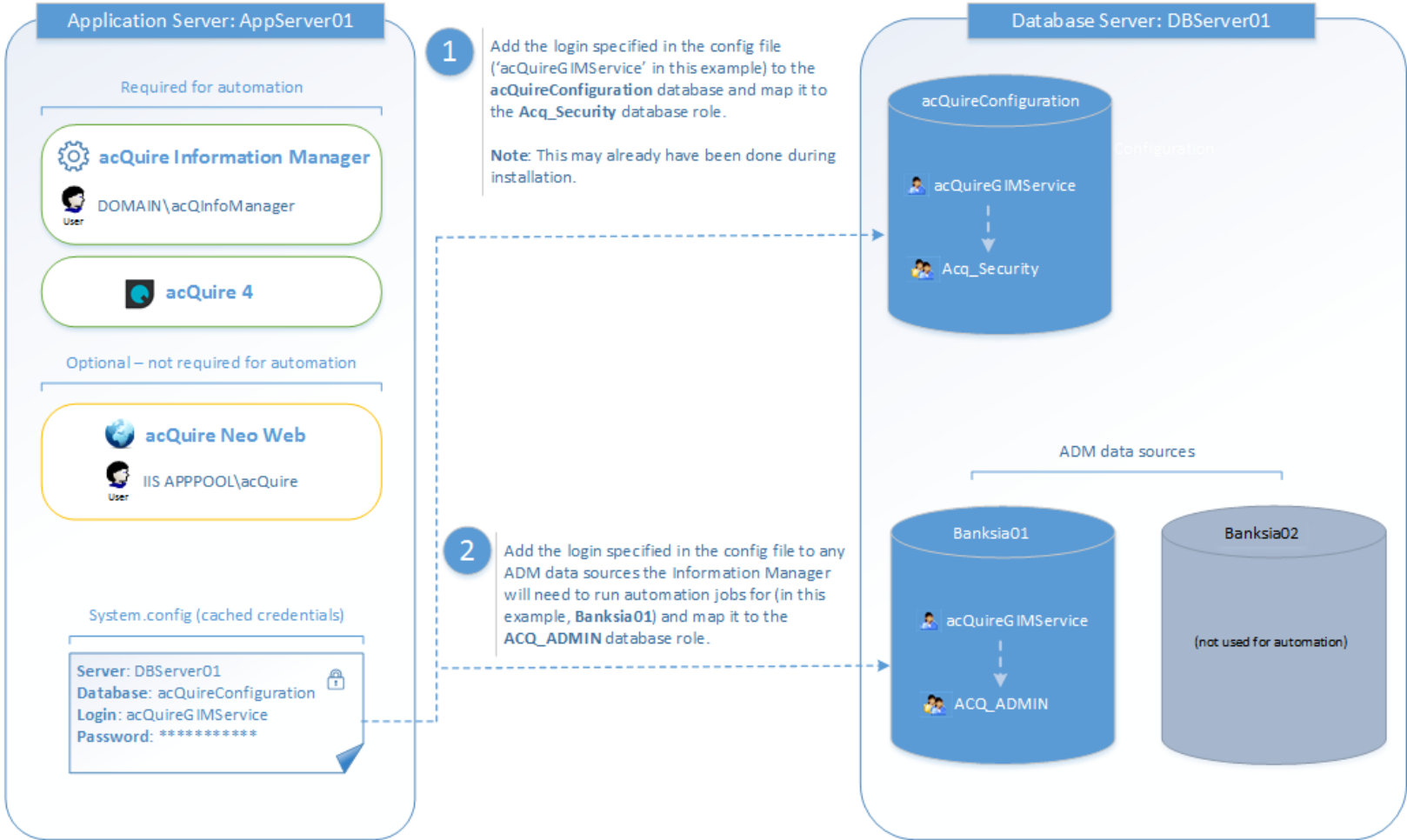
- If it does not exist, select the **create new** option to deploy a new one.
- If you have previously used the AcqSecurity database for acquire Neo Web, simply select this as your existing configuration database.

After clicking **verify and continue**, the encrypted connection details will be written to the system.config file.



Refer to Section 2 of the Automation User Guide for details.

Step 2: Configuring the Database Logins



Refer to Section 3 of the Automation User Guide for detailed steps.

Step 3a: Client Side Setup – Configuration and Licence Server

1 On the acquire Manager's client machine, open the **Manage>Automation>Automation Setup** dialog and define the location of your acquireConfiguration database and the credentials to use when connecting to it. **Note:** Your workspace must be connected to the database that you want to configure automation jobs for.

Client Machine: Client01

Read from config file when dialog is opened (if file already exists, otherwise a new one will be created once setup is complete).

Write to config file when dialog is closed (if any changes made).

System.config (cached credentials)

```

Server: DBServer01
Database: acquireConfiguration
Login: acquireGIMService
Password: *****
    
```

2 Also within the **Automation Setup** dialog, enter the licence server the Information Manager will use when running task automation jobs and click **Apply**. **Note:** This is not required if you are only running data caching jobs.

Client Machine: Client01

System.config (cached credentials)

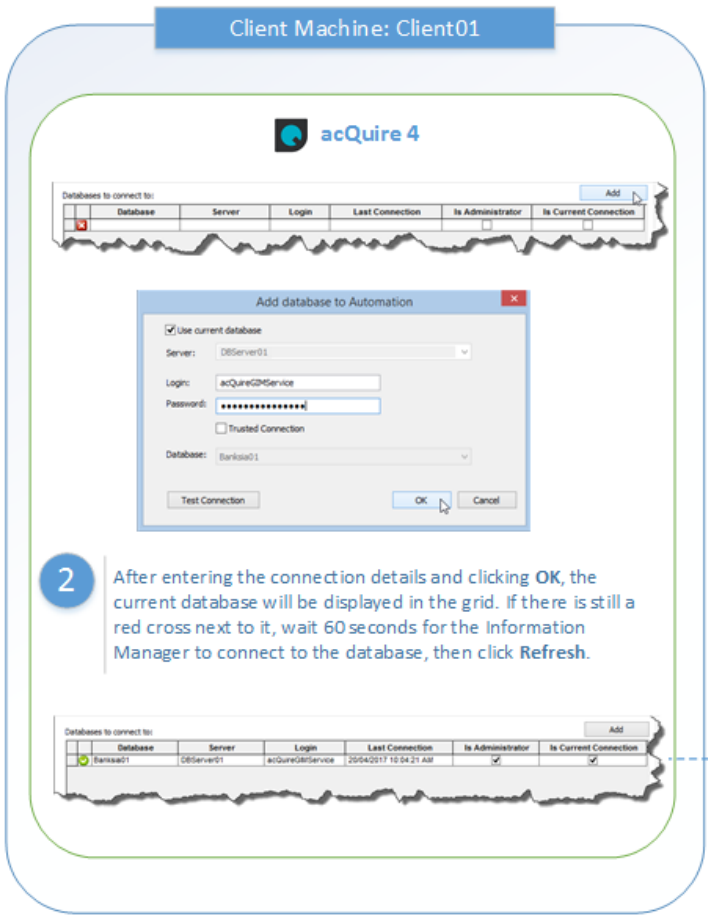
```

Server: DBServer01
Database: acquireConfiguration
Login: acquireGIMService
Password: *****
    
```

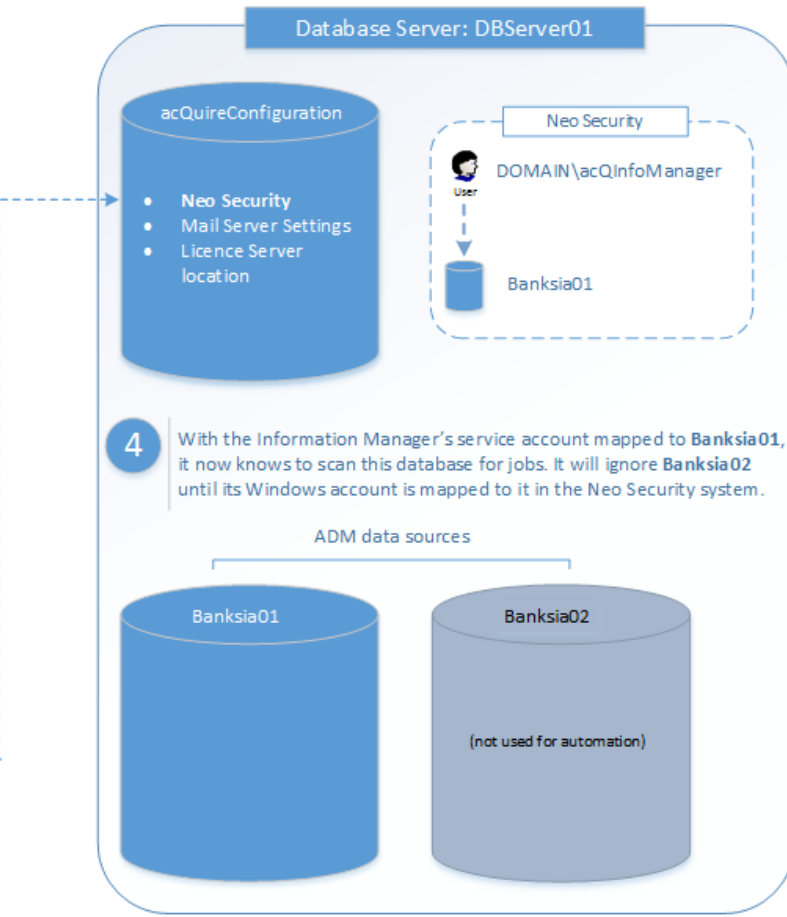
Refer to Section 3.2.1 of the Automation User Guide for details.

Step 3b: Client Side Setup – Adding Data Sources

1 Click the **Add** button above the **Databases to connect to** grid and select the **Use current database** checkbox in the **Add database to Automation** dialog that opens.



3 acQure 4 automatically adds the data source to the **Neo Security** section of the Configuration database (if it does not already exist). It also adds the service account used by the Information Manager as a **Neo Security** user and maps it to the data source.



Refer to Section 3.2.1.1 of the Automation User Guide for details.

Step 4: Task Automation Setup

1 Select **Manage>Automation>Task Automation Wizard** to set up a task automation job. Define whether any notifications should be sent when the job completes, then click **Add Task** to start configuring the tasks you want to automate.

3 When you click **Finish** to complete the setup of the job, the details will be written to the Neo meta system within the current database (in this example, **Banksia01**).

Client Machine: Client01

2 After configuring all the tasks for the job, click **Next** to define the schedule for the job.

Database Server: DBServer01

ADM data source

Task Automation Jobs

Job	Task	Schedule
Load Assay Data	Import Analytical Data	Every hour (6 am to 6 pm)
Collar Coordinates Update	Import Collar Surveys	
	Transform Coordinates	Once a day at 6 pm
	Export to GIS	

Refer to Section 4 of the Automation User Guide for details.

Step 5: Data Caching Setup

1 Select **Manage>Automation>Data Caching Wizard** to set up a data caching job. Define a name for the group and add the form definitions you want to cache.

3 When you click **Finish** to complete the setup of the caching group, the details will be written to the Neo meta system within the current database (in this example, **Banksia01**).

Client Machine: Client01

2 After defining which form definitions you want to cache, click **Next** to set up the schedule for the cache group.

Database Server: DBServer01

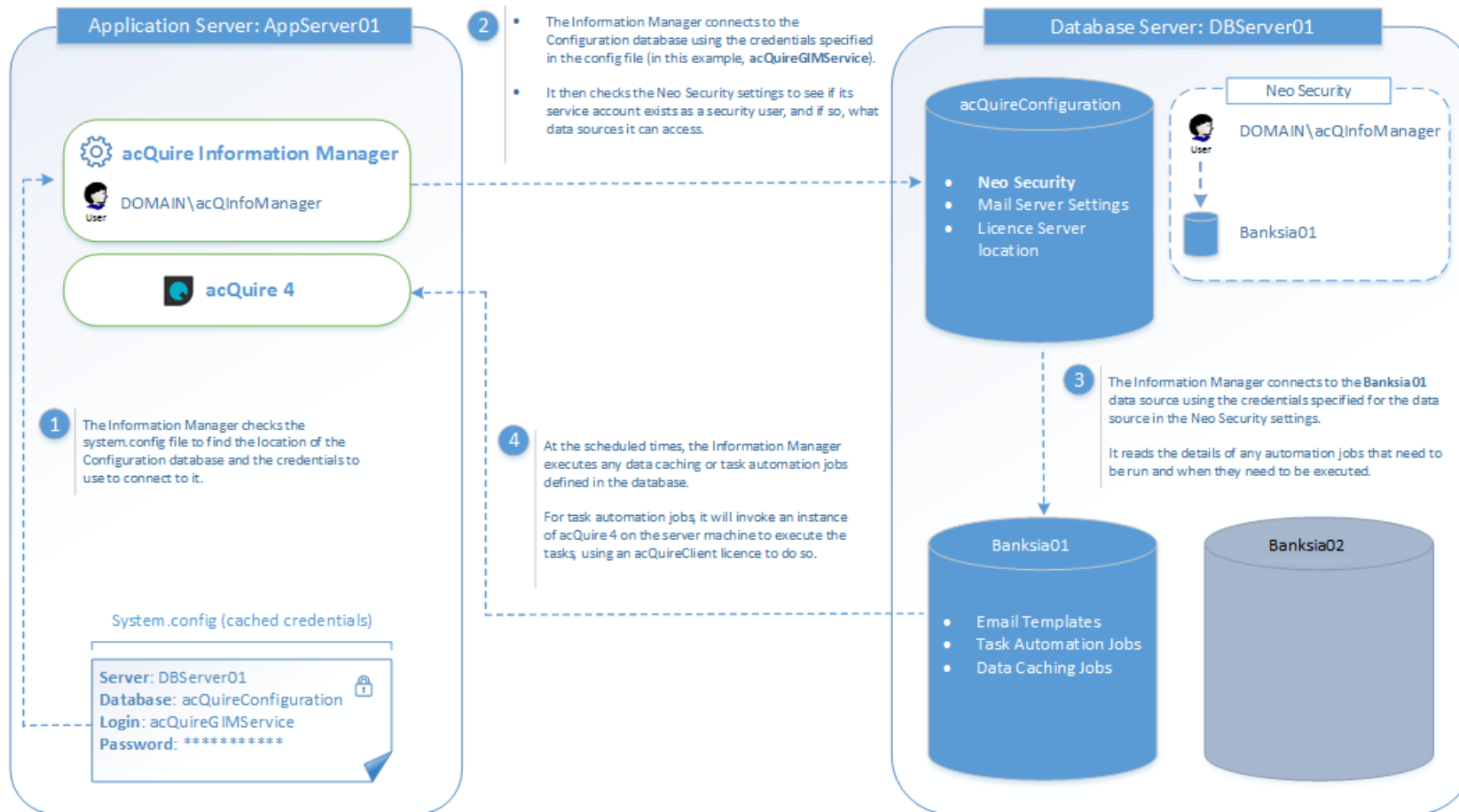
ADM data source

Data Caching Jobs

Caching Group	Form Definition	Schedule
Nightly Geophysics Update	Best Geophysics - Hakea	Once a day at 6 pm
	Best Geophysics - Acada	
Best Assays Update	Best Assays - Drillholes	Every hour (6 am to 6 pm)
	Best Assays - Geochem	

Refer to Section 5 of the Automation User Guide for details.

How it Works: Automation in Action



The Information Manager will repeat this cycle approximately once per minute.



Contact

Offices	Australia, Canada, Chile, South Africa
Street address	26 Kintail Road, Applecross, Western Australia, 6153
Postal address	PO Box 933, Canning Bridge, Western Australia, 6153
Telephone	+61 8 9316 6600
Fax	+61 8 9316 6699
Email	acquire@acquire.com.au
Website	www.acquire.com.au

Official information

acQure Software Pty Ltd is the owner of the software and all icons and logos within the software, together with all soft and hardcopy documentation.

This document is copyright. No part of this document may be reproduced by any process, or in any form, without prior written consent from acQure Technology Solutions Pty Ltd.

Disclaimer

acQure Software Pty Ltd will not accept any liability arising from the use of the software or any other software product mentioned in this document; nor for any technical or editorial errors or omissions made in this document. The mention of any other computer software product in this document does not imply the endorsement of such product by acQure Software Pty Ltd.